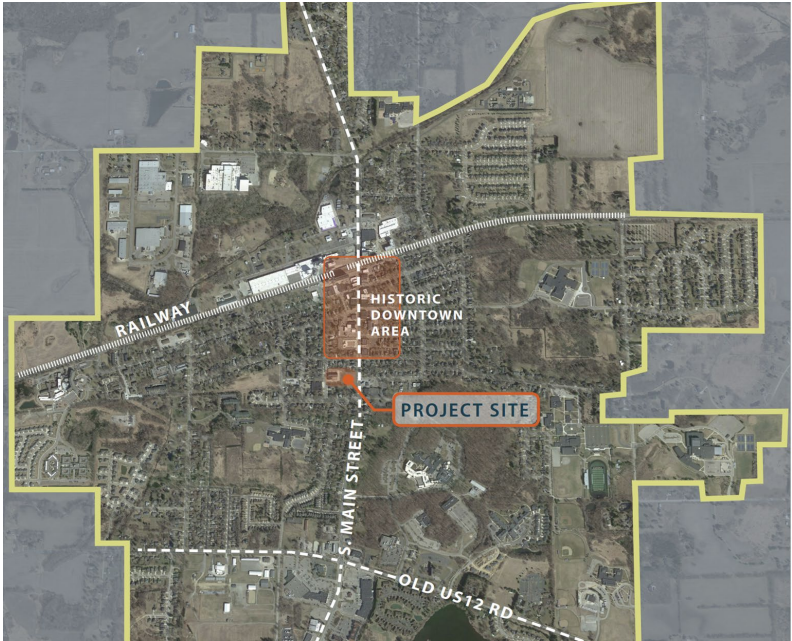




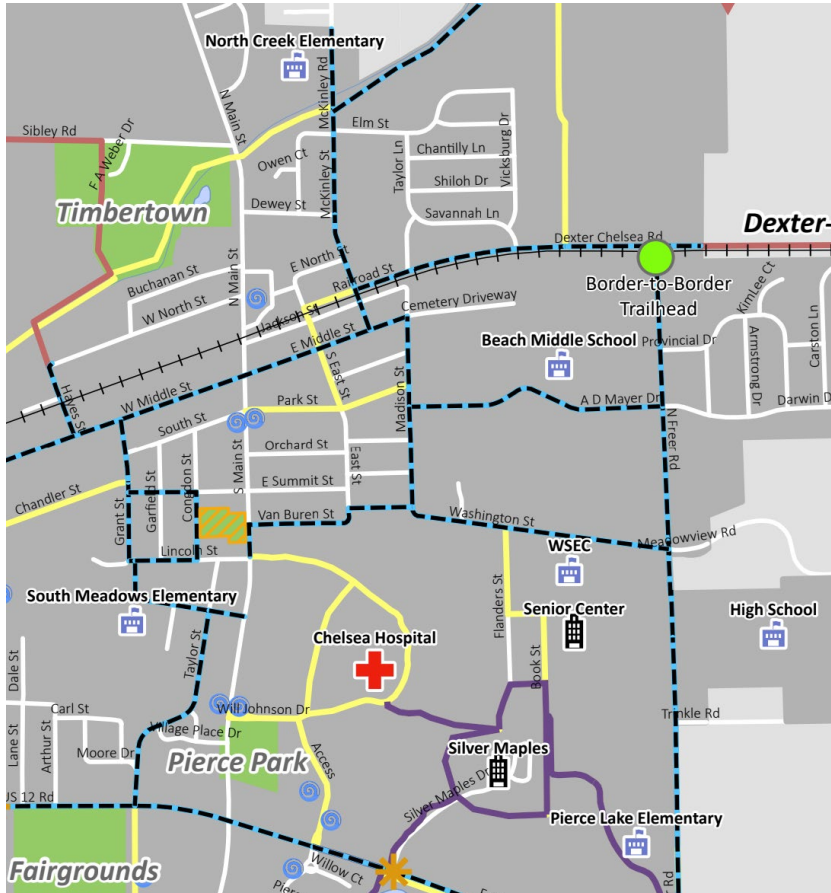
A story of an environmentally challenged property brought to life by the Chelsea community, the Main Street Park Alliance and the City of Chelsea



# Blighted site sat abandoned for over twenty years...



Building this park meant the everything – it represents hope, resilience and a shared vision...



## Chelsea Master Plan and Park & Recreation Plan

- Acquisition of Park Land
- Additional Green Space
- Promote Walkability
- Accessibility
- Connection to Non-Motorized Pathways
- Expand Recreational Opportunities
- Promote Habitat Restoration

The result is from a city that chose to come together to build something lasting...

Main Street Park Alliance (501c3) formed to revitalize the currently blighted downtown Chelsea property and transform it into a safe, active, accessible public space.



PARKS & RECREATION  
WASHTENAW  
COUNTY *Michigan*

**EGL**E



COMMUNITY &  
ECONOMIC DEVELOPMENT  
WASHTENAW  
COUNTY *Michigan*



**JIFFY** *mix*



Chelsea  
Senior Center



CHELSEA  
SCHOOL DISTRICT

Park is scheduled to open July 11, 2026 – struggles and triumphs...



Response Activity Plan  
APPROVED by EGLE  
in 2024

- \$1M EGLE Grant Awarded
- \$867k Washtenaw County Brownfield Grant Awarded
- Remediation to begin 2024

# More than a park – it is a place to belong for everyone...



Community Centered

Environmental &  
Ecological Restoration

Social Connection &  
Intergenerational Play

Outdoor Recreation -  
Promote Physical/Mental  
Health & Wellbeing

Universally Accessible

Performance & Cultural  
Events

Together we chose to emphasize ecological restoration to reflect natural character.



## Environmentally Sensitive Design and Ecological Restoration

### SHADE TREES/LANDSCAPING COVERAGE

NATIVE RESTORATION PLANTING:	.5 ACRE
LANDSCAPED AREA:	.4 ACRE
TURF:	.5 ACRE

**TOTAL GREEN SPACE: 1.4 ACRES**

TREE CANOPY: 1 ACRE

**TOTAL PARK ACREAGE: 2.82 ACRES**



**\$1,012,500**

MNRTF Grant



**\$8,300,500**

Total Investment



**720%**

Impact

# CITY OF CHELSEA

Main Street Park Alliance

**Holmes Family Park**

Opens July 11th

New skate store opened downtown as a result called Concrete Chelsea who is partnering to host lessons and tournaments