



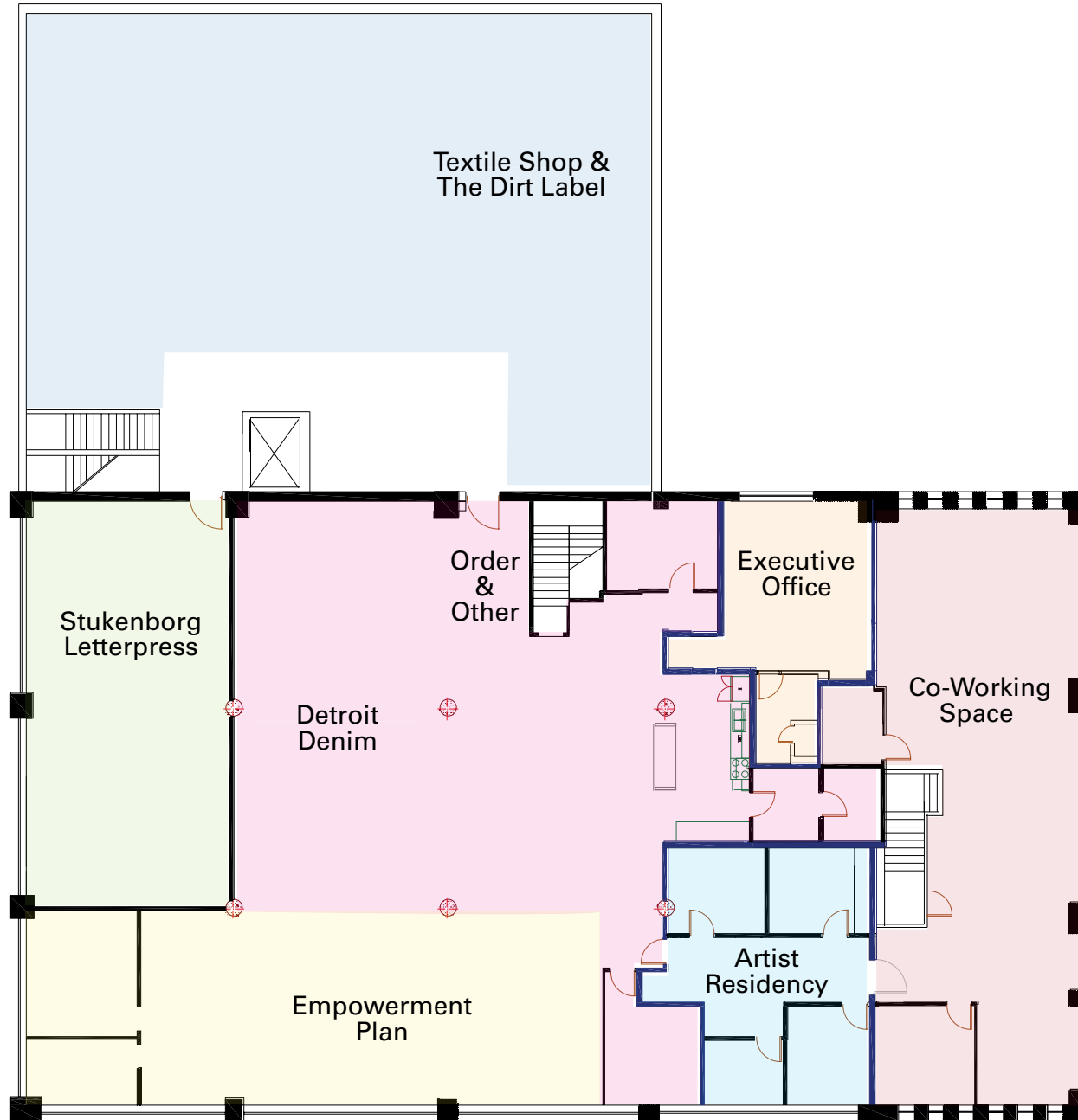
Ponyride
First Floor Plan
Scale 1/8" = 1'-0

Smith Shop - Metals Studio
(3 ppl)
<http://smithshopdetroit.com>

Anthology Coffee - Coffee Roaster (2 ppl)
<http://www.anthologycoffee.com>

Dance Studio - Shared space with Le Jit Entertainment, Heritage Works, Yoga, En Garde, Education, and lectures (Capacity 50 ppl)

Wood Shop - Shared equipment with Phillip Cooley LLC., Paul Karas Designs, Hunt & Noyer Woodworks (5 ppl)



Ponyride

First Floor Plan
Scale 1/8" = 1'-0

Stukenborg Letterpress - Type set letterpress (1 person)
<http://www.etsy.com/shop/Stukenborg>

Detroit Denim - 100% USA sourced & manufactured jeans (3 ppl) <http://detroitdenim.us>

Empowerment Plan - A Non-profit that manufactures Coats for Homeless (9 ppl & growing) <http://www.empowermentplan.org>

Textile Space - Future home to screen printing and hot press (5 ppl) <http://www.thedirtlabel.com>

Order & Other - Film production & documentation studio (3 ppl) <http://orderandother.com>

Co-working Space - Shared collaborative space for a variety of diverse entrepreneurial backgrounds (30 ppl) <http://ponyride.org>

Artist Residency - A crash pad for visiting artists to stay and check out Detroit's cityscape <http://ponyride.org>