

# What To Do When You Are Expecting: Spending New Transportation Revenue Wisely

March 11, 2026

Brad Strader, AICP, PTP  
Cincar Consulting Group (C2G)

# Why Transportation is Important

- Streets are often 20% of the land in a community
- Streets and ROW design influence the **character and economy**
- One size does not fit every street – flexible standards, be **transformative**
- **Be Visionary** – street redesign only happens once per generation

**NOW** – E Warren Ave (Detroit, MI)

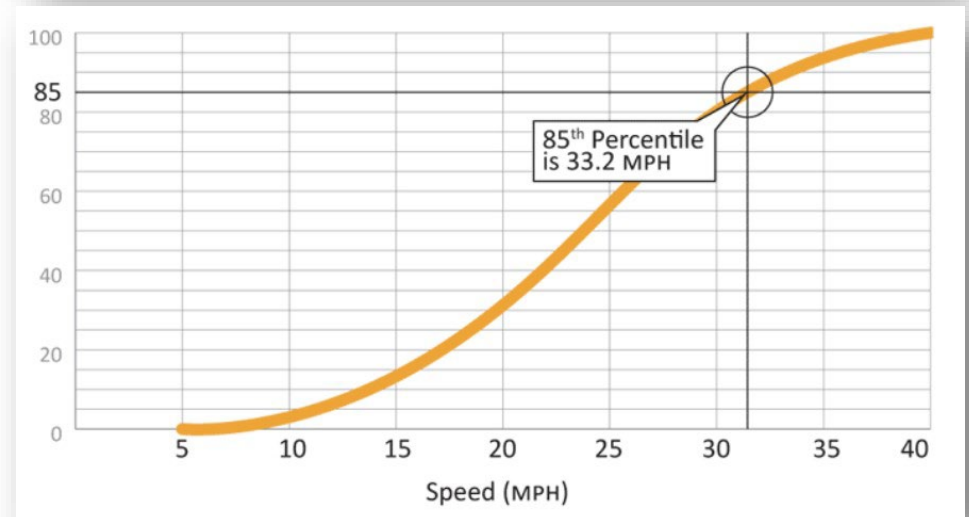
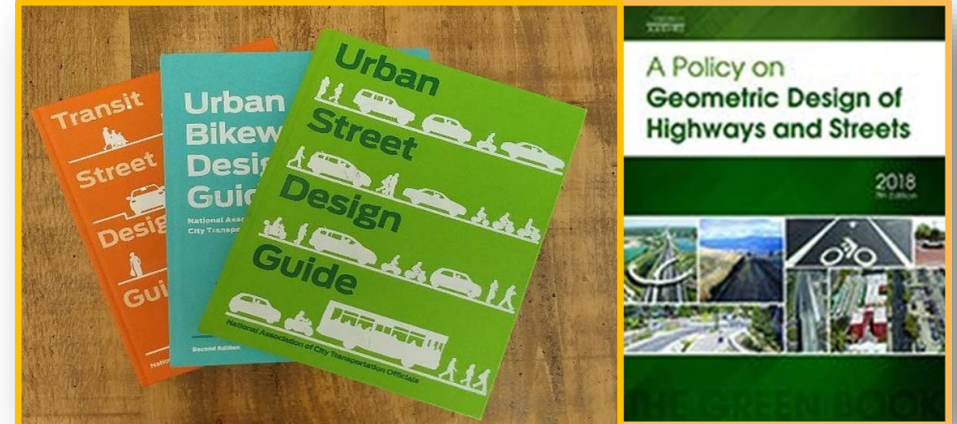


**BEFORE** – E Warren Ave (Detroit, MI)



# Understanding Transportation Language

- **Act 51** – Michigan’s street funding program (major and minor streets)
- Auto **Level of Service** (A-D) vs Multimodal Quality or Comfort
- Computer Models to test alternatives (Synchro, Travel Demand)
- Land Uses and Street Design influence speeds (**85<sup>th</sup>/50<sup>th</sup> percentile**)
- **Street design** is not in the zoning ordinance
- **Complete Streets** is a newer way to look at transportation solutions (City Resolution?)



# Selection of Projects and Priorities

- City Policies/Plans – Master Plans, Downtown, Corridor Plans, Non-Motorized, CIP projects
- MPO's/Regional, transit agency Long Range Transportation Plans
- Crash, Volume, Conditions Data
- Public Input
- "Safe Streets for All", MDOT Road Safety Audits

**How can your transportation projects contribute to Creative Placemaking?**



# Project Design: Street Design Toolkit

- MDOT/SEMCOG Easy-to-Use Web-based Street Design Toolkit



Welcome to the Multimodal Tool! Complete streets are a focal point for Southeast Michigan communities as they strive to develop transportation networks that are safe, convenient, and affordable for people of all ages and abilities. Use this tool to test complete street designs and understand how they serve people walking, biking, driving, riding transit, and moving freight. Take the tour to learn more, or launch the app to get started!

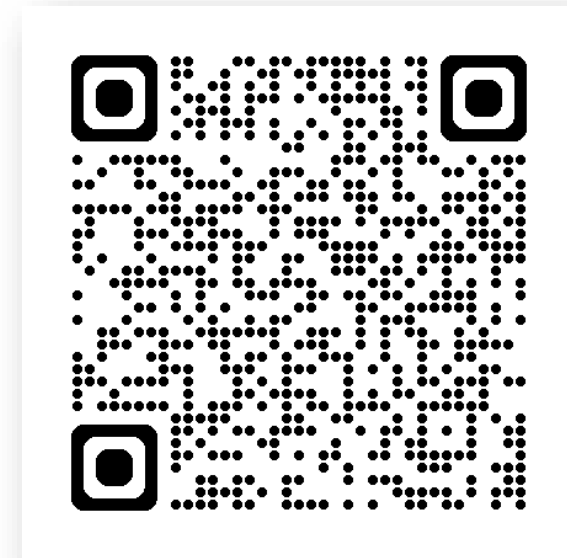
Visit <https://www.semcog.org/mmtool> for more information.

TAKE THE TOUR →

LAUNCH APP →

SETUP PROJECT  
MANUALLY →

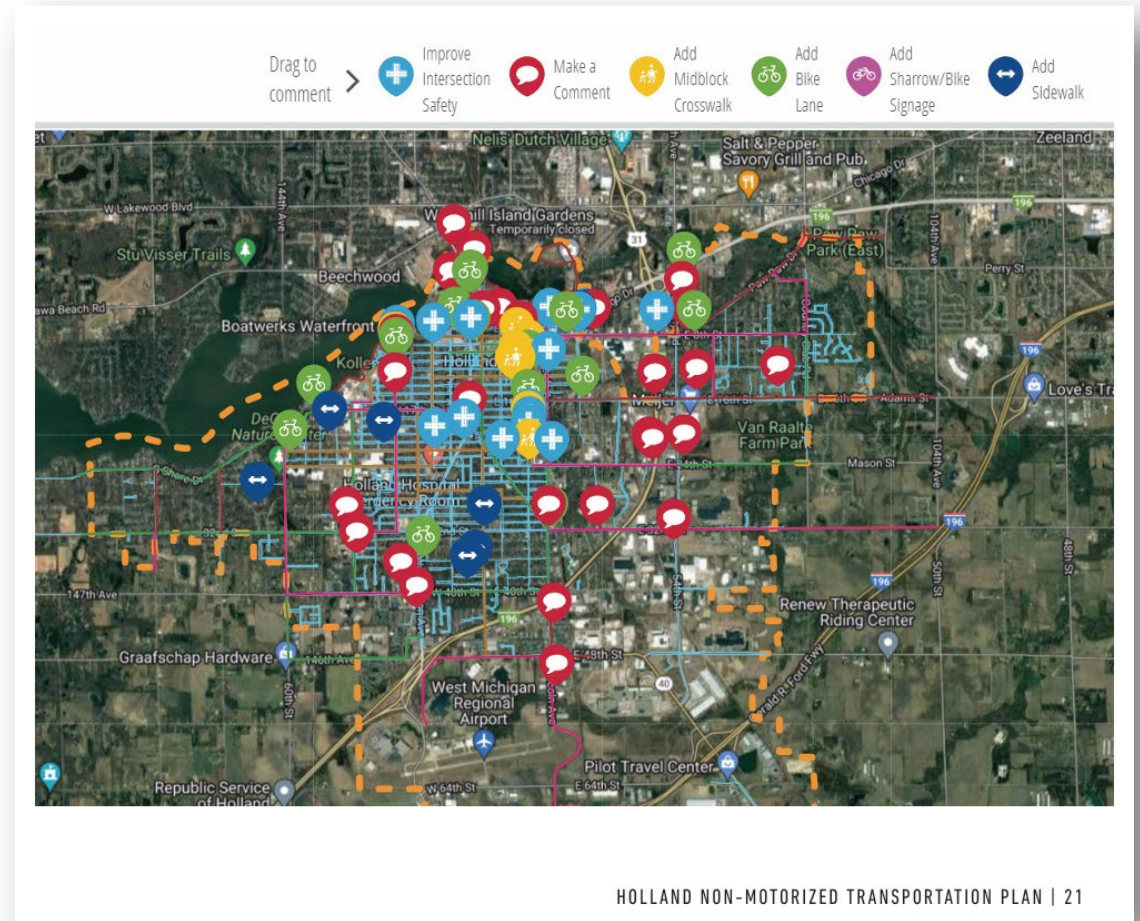
Do not show this dialog again



<https://multimodal.semcog.org/>

# Who to Involve

- Who makes planning and design decisions in your city or village?
  - Who owns the street? (MDOT, County, City, shared)
  - **Funders:** Grants, MPO, MDOT, Federal Funds, Private
  - Consider **Long Term Maintenance**
  - Input from your Planner, Economic Development, Engineer, PDW
- Public and stakeholders



# Engineers and Planners have different perspectives

## Traffic Engineer

1. Auto focused vs “Plangineer”
2. Rely on engineering standards
3. Long outlook, 30 yr traffic forecasts
4. Can be innovative, “Design Exceptions”
5. Focus on Safety

## Planner

1. Less focused on autos
2. Seek consensus
3. Plans tend to change
4. Promote Flexible Standards
5. Focus on Safety



**Vision  
vs  
Reality**



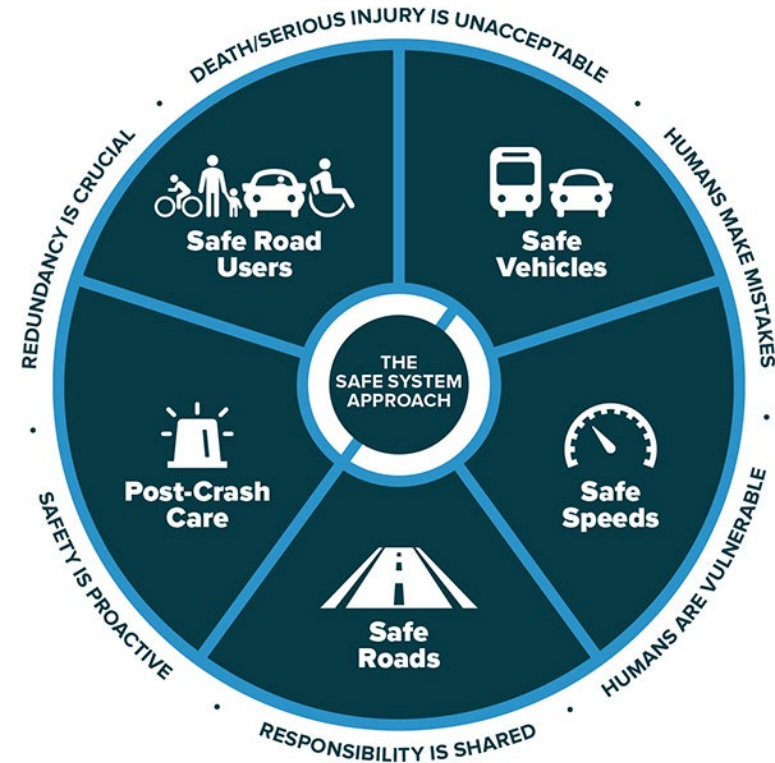
# Transportation Leaders and Innovators



**Where do you fit? Where do you want to be?**

# TIPS

- Safety is very important
- Consider all types of users
- Understand the engineering metrics
- Improvements can be large or small
- Pilot projects can temporarily test ideas
- Don't say "Road Diet"



Source: FHWA.